



**Mekong River Commission**

**Weekly Dry Season Situation Report in  
the Lower Mekong River Basin  
22-28 February 2022**

Prepared by  
The Regional Flood and Drought Management Centre  
01 March 2022

*The MRC is funded by contributions from its Member Countries and Development Partners, including Australia, Belgium, the European Union, Finland, France, Germany, Japan, Luxembourg, the Netherlands, Sweden, Switzerland, the United States and the World Bank.*

**Copyright © Mekong River Commission, 2020**

First published (2020)

Some rights reserved

This work is the product of the Mekong River Commission Secretariat. While all efforts are made to present accurate information, the Secretariat does not guarantee the accuracy of the data included in this work. The boundaries, colours, denomination, and other information shown on any map in this work do not imply any judgement on the part of the MRC concerning the legal status of any territory or the endorsement or acceptance of such boundaries.

Nothing herein shall constitute or be considered to be a limitation upon or waiver of the privileges and immunities of the MRC, all of which are specifically reserved.

This publication may be reproduced in whole or in part and in any form for educational or non-profit purposes without special permission from the copyright holder, provided acknowledgement of the source is made and notification is sent to the MRC. The MRC would appreciate receiving a copy of any publication that uses this publication as a source. This publication cannot be used for sale or for any other commercial purpose whatsoever without permission in writing from the MRC.

**Title:** Weekly wet season situation report in the Lower Mekong River Basin for 22-28 February 2022.

ISSN: 1728-3248

Keywords: flood/drought/weather/Mekong/Tonle Sap

For bibliographic purposes, this volume may be cited as:

Mekong River Commission. (2020). *Weekly dry season situation report in the Lower Mekong River Basin for 22-28 February 2022*. Vientiane: MRC Secretariat.

Information on MRC publications and digital products can be found at  
<http://www.mrcmekong.org/publications/>

**All queries on rights and licenses should be addressed to:**

Mekong River Commission

Documentation and Learning Centre

184 Fa Ngoum Road, Unit 18, Ban Sithane Neua, Sikhottabong District, Vientiane 01000, Lao PDR

Telephone: +856-21 263 263 | E-mail: [mrcs@mrcmekong.org](mailto:mrcs@mrcmekong.org) | [www.mrcmekong.org](http://www.mrcmekong.org)

# Contents

- Figures..... 2
- Table ..... 3
- Key Messages ..... 4
- 1 Introduction ..... 6
- 2 General Weather Patterns ..... 7
- 3 Water Levels in the Lower Mekong River ..... 11
- 4 Flash Flood in the Lower Mekong Basin ..... 18
- 5 Drought Monitoring in the Lower Mekong Basin..... 19
- 6 Weather and Water Level Forecast and Flash Flood Information ..... 22
  - 6.1 *Weather and rainfall forecast* ..... 22
  - 6.2 *Water level forecast* ..... 23
  - 6.3 *Flash Flood Information*..... 24
  - 6.4 *Drought forecast*..... 24
- 7 Summary and Possible Implications ..... 27
  - 7.1 *Rainfall and its forecast*..... 27
  - 7.2 *Water level and its forecast*..... 27
  - 7.3 *Flash flood and its trends*..... 28
  - 7.4 *Drought condition and its forecast*..... 28

## Figures

<b>Figure 1: Summary of weather conditions over the LMB. ....</b>	<b>7</b>
<b>Figure 2: Outlook of wet and dry conditions over the Asian countries by ASMC.....</b>	<b>8</b>
<b>Figure 3: No tropical storm risk observed on 28 February 2022. ....</b>	<b>8</b>
<b>Figure 4: Weekly total rainfall at key stations in the LMB.....</b>	<b>9</b>
<b>Figure 5: Weekly rainfall distribution over the LMB.....</b>	<b>10</b>
<b>Figure 6: Key stations and model application for River Monitoring and Flood Forecasting.....</b>	<b>11</b>
<b>Figure 7. Water level at the Jinghong hydrological station during 15 Oct 2021 to 21 Feb 2022.....</b>	<b>12</b>
<b>Figure 8. Water levels at Chiang Saen in Thailand and Luang Prabang in Lao PDR. ....</b>	<b>13</b>
<b>Figure 9. Water levels Nong Khai and Paksane in Thailand and Lao PDR. ....</b>	<b>14</b>
<b>Figure 10: Water levels at Nakhon Phanom and Savannakhet of Thailand and Lao PDR. ...</b>	<b>14</b>
<b>Figure 11: Water levels at Stung Treng and Kratie on the Mekong River. ....</b>	<b>15</b>
<b>Figure 12: Seasonal change of inflows and outflows of Tonle Sap Lake. ....</b>	<b>16</b>
<b>Figure 13. The seasonal change in monthly flow volume of Tonle Sap Lake.....</b>	<b>17</b>
<b>Figure 14: Weekly standardised precipitation index from Feb 20 to 26. ....</b>	<b>19</b>
<b>Figure 15: Weekly Index of Soil Water Fraction from Feb 20 to 26.....</b>	<b>20</b>
<b>Figure 16: Weekly Combined Drought Index during Feb 20-26.....</b>	<b>21</b>
<b>Figure 17: Accumulated rainfall forecast (24 hrs) of model GFS. ....</b>	<b>23</b>
<b>Figure 18. Daily average of monthly rainfall anomaly forecast from February to April 2022. ....</b>	<b>25</b>

**Table**

**Table 1. The monthly change in the flow volume of Tonle Sap Lake. .... 17**

**Table 2. Weekly River Monitoring Bulletin. .... 26**

## Key Messages

Key messages for this weekly report are presented below.

### Rainfall and its forecast

- During 22-28 February 2022, rainfall was detected in the Mekong River Basin (MRB), varied from 3.50 mm to 47.40 mm.
- There will be some rain for the next 7 days over the Mekong region from 1 to 7 March 2022 due to low-pressure line dominating some parts in the LMB.

### Water level and its forecast

- The MRC's observed water level at Jinghong showed a significant decrease from 535.97 m to 535.52 m during the weekly monitoring period from 22 to 28 Feb 2022 (recorded on 7:00 am) and stayed about 0.08 m lower than its two-year average (2020-2021) value. The outflow at Jinghong station decreased from 1,311.00 m<sup>3</sup>/s to 997.00 m<sup>3</sup>/s on 22 and 28 February 2022.
- Along with the sudden decreased outflow from Jinghong upstream, water level (WL) of monitoring station at Chiang Saen in Thailand decreased about 0.02 m from 22 to 28 Feb 2022 and stayed about 0.55 m higher than its long-term average (LTA), considered normal. Water level at Lao PDR's Luang Prabang decreased about 0.02 m compared with last week and stayed 0.35 m lower than its historical maximum value. WLs at the monitoring stations from Chiang Khan in Thailand to Vientiane of Lao PDR increased 0.50 m and remained higher than their LTA value over 1.00 m. Water levels from Nong Khai in Thailand rised 0.38 m, while at Paksane in Lao PDR WL increased about 0.36 m, rising to their LTA level and considered normal. Also, WLs from Thailand's Nakhon Phanom to Lao PDR's Pakse increased about 0.25 m and stayed higher than their LTA level, except at Savannakhet where WL remained lower than its LTA value. Water levels from the stretches of the river from Stung Treng to Kompong Cham in Cambodia slightly increased and those from Chaktomuk to Koh Khel and Prek Kdam also increased due to less contributed rainfall from the upstream part (The Tonle Sap Lake area).
- The water volume of the Tonle Sap Lake up to 28 Feb 2022 was lower than its LTA but higher than the levels in 2019, 2020 and 2021 during the report period, and still considered critical.
- Water levels at Tan Chau and Chau Doc remained fluctuating between their Minimum and Maximum values due to the tidal process.
- Over the next seven days, the water levels across the monitoring stations are expected to go up from Kompong Cham to Chaktomuk and Prek Kdam in Cambodia. Water levels at most of stations currently remain higher than their long-term average value, while the others remain lower.

### Drought condition and its forecast

- Drought conditions of the LMB from 20 to 26 February 2022 were normal in most parts of the LMB except some moderate and severe soil moistures in the middle and southeastern parts due to absence of rain but it is quite normal during dry season. The region showed no significant threat.

- For the upcoming three-month forecast, the LMB is likely to receive average rainfall and under normal conditions in February and March while receive relatively high amount of rain in April 2022. Based on the rainfall forecasts, April is likely to be much wetter than normal year especially in the north and central parts of the LMB.



# 1 Introduction

This Weekly Dry Season Situation Report presents a preliminary analysis of the weekly hydrological situation in the Lower Mekong River Basin (LMB) for **22-28 February 2022**. The trend and outlook for water levels are also presented.

This analysis is based on the daily hydro-meteorological data provided by the Mekong River Commission (MRC) Member Countries – Cambodia, Lao PDR, Thailand, and Viet Nam – and on satellite data. Water level indicated in this report refers to an above zero gauge of each station.

The report covers the following topics that are updated weekly:

- General weather patterns, including rainfall patterns over the LMB
- Water levels in the LMB, including in the Tonle Sap
- Flash flood and drought situation in the LMB
- Weather, water level and flash flood forecast, and
- Possible implications.

Mekong River water levels are updated daily and can be accessed from:  
[http://ffw.mrcmekong.org/bulletin\\_wet.php](http://ffw.mrcmekong.org/bulletin_wet.php).

Drought monitoring and forecasting information is available at:  
<http://droughtforecast.mrcmekong.org>

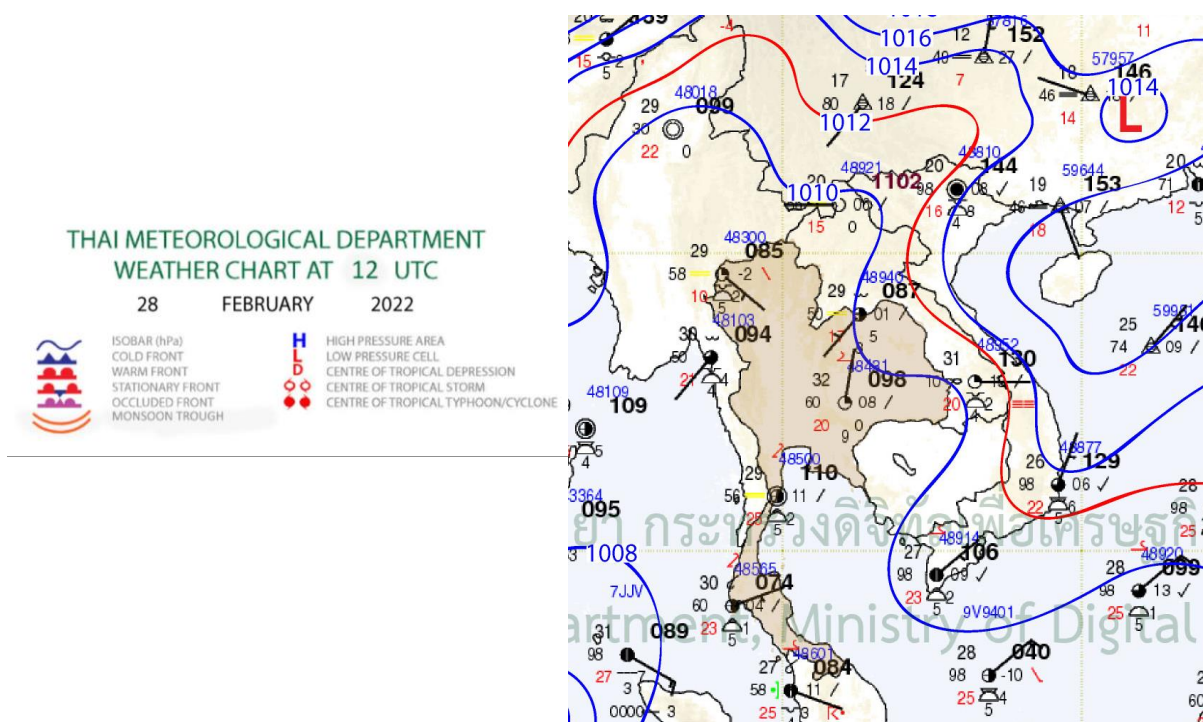
Flash flood information is accessible at: <http://ffw.mrcmekong.org/ffg.php>

## 2 General Weather Patterns

The weather outlook bulletins for three months (February, March and April) and the weather maps issued by the Thai Meteorological Department (TMD) were used to verify weather conditions in the LMB.

Since the end of February 2022, the warm weather has come because the influentially high-pressure air mass areas prevail over the LMB with gradually decreasing water levels in both mainstream and tributaries. The data from the TMD predict that low pressure of air-mass will bring warm and wet weather condition in the upper part and lower part of LMB. From March to April, it is the period of summer when the high-pressure air mass areas prevailing over Thailand is weaken over the Mekong region.

[Figure 1](#) presents the weather map of 28 February 2022, showing a line of low pressure of the Monsoon Trough crossing the upper Mekong area in the northern part of Lao PDR and the 3S area in Cambodia and middle part of Viet Nam, which will attract rain for the next few days over those areas.



**Figure 1: Summary of weather conditions over the LMB.**

According to the ASEAN Specialised Meteorological Centre (ASMC), the highest probability of wet and warm conditions is predicted over the lower part of the Mekong region covering Lao PDR and Thailand from 21 February to 6 March 2022, during the 4<sup>th</sup> and 1<sup>st</sup> weeks of February and March, respectively. Moreover, the Mekong region is likely dominated by wet and warm conditions, which may bring warmer temperature in general to the lower part of the LMB. **Figure 2** shows the outlook of weather condition from 21 February to 6 March 2022 in Southeast Asia based on results from the NCEP model (National Centres for Environmental Prediction).

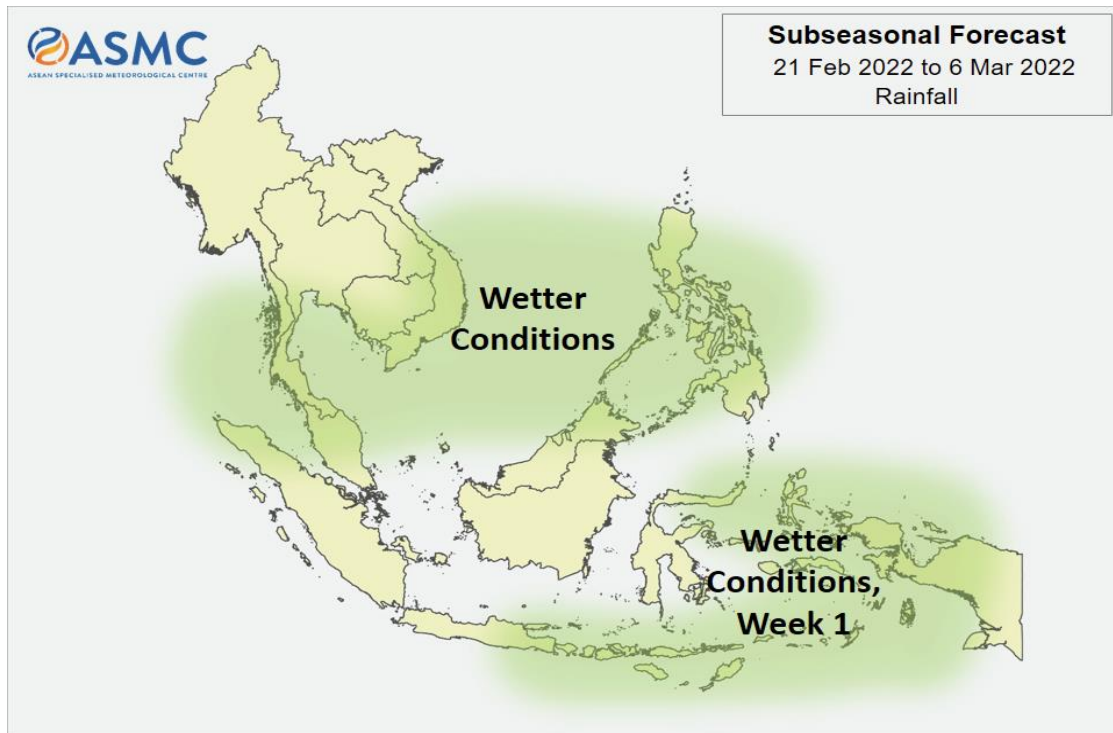


Figure 2: Outlook of wet and dry conditions over the Asian countries by ASMC.

### Tropical depressions (TD), tropical storms (TS) and typhoons (TY)

There was no tracking storm covering the LMB during 22-28 February 2022, meaning no movement of storm detected from the South Sea of Viet Nam, as displayed in [Figure 3](#).

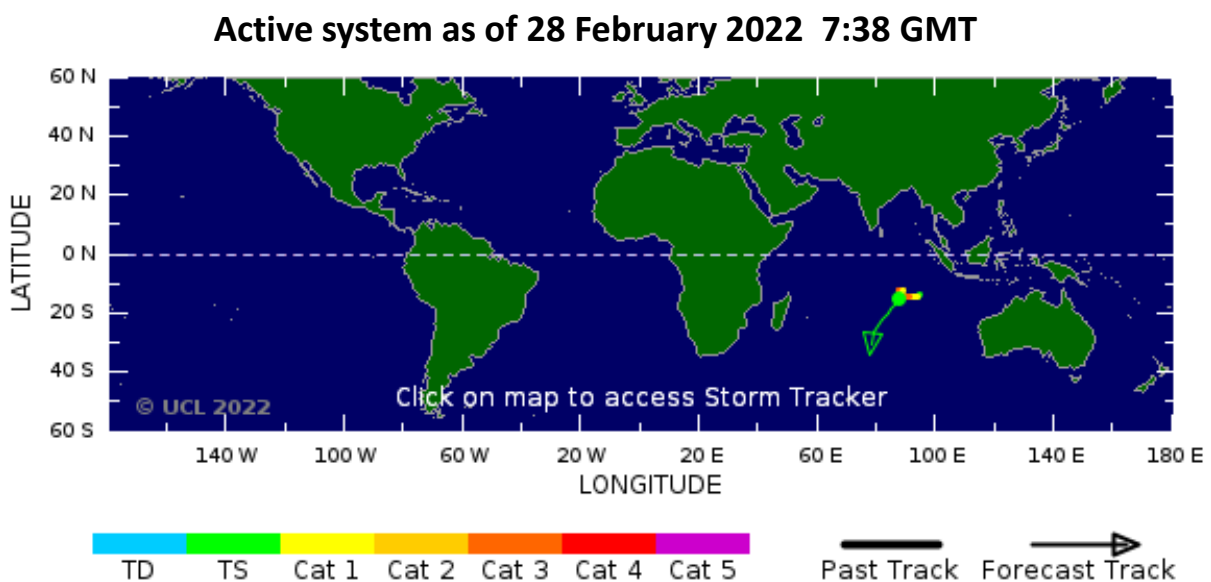
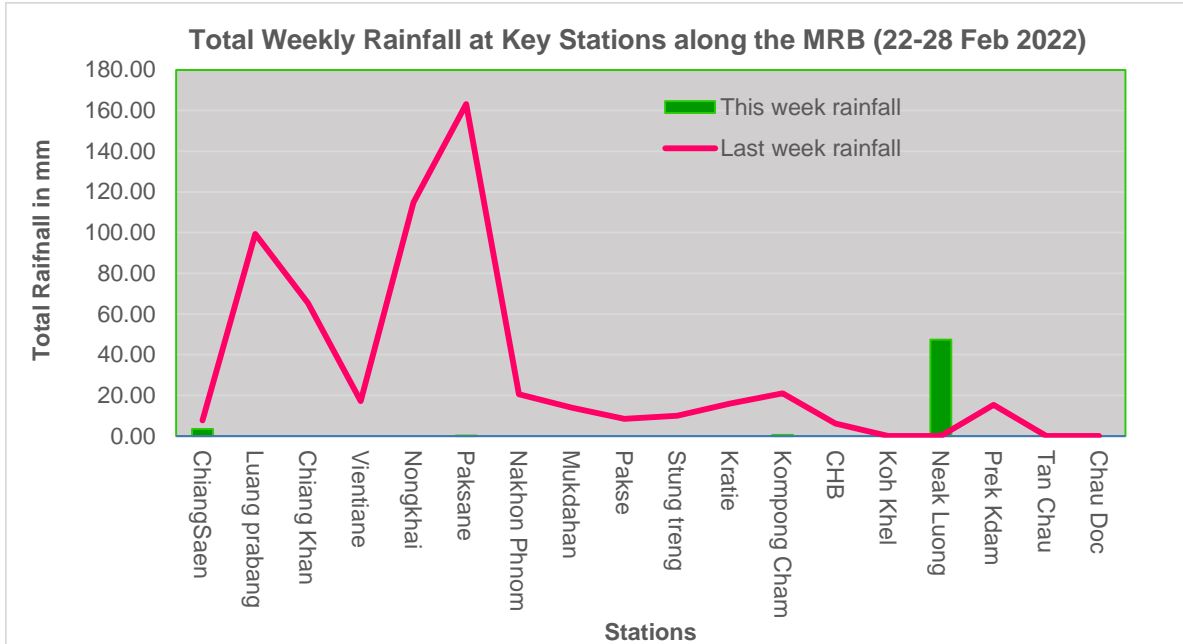


Figure 3: No tropical storm risk observed on 28 February 2022.

## Rainfall patterns over the LMB

This week, rainfall was observed over the Lower Mekong Basin (LMB), at Chaing Saen in Thailand and Neak Luong in Cambodia, varying from 3.50 mm to 47.40 mm. The rainfall from 22 to 28 February is relatively small, compared with last week rainfall, as shown in [Figure 4](#).



**Figure 4: Weekly total rainfall at key stations in the LMB.**

To verify area rainfall distribution, [Figure 5](#) shows a map of the weekly accumulated rainfall based on the observed data provided by the MRC Member Countries – Cambodia, Lao PDR, Thailand, and Viet Nam – from 22 to 28 February 2022.

Small amount of rain this week is an indication of the end of the rainy season in the LMB.

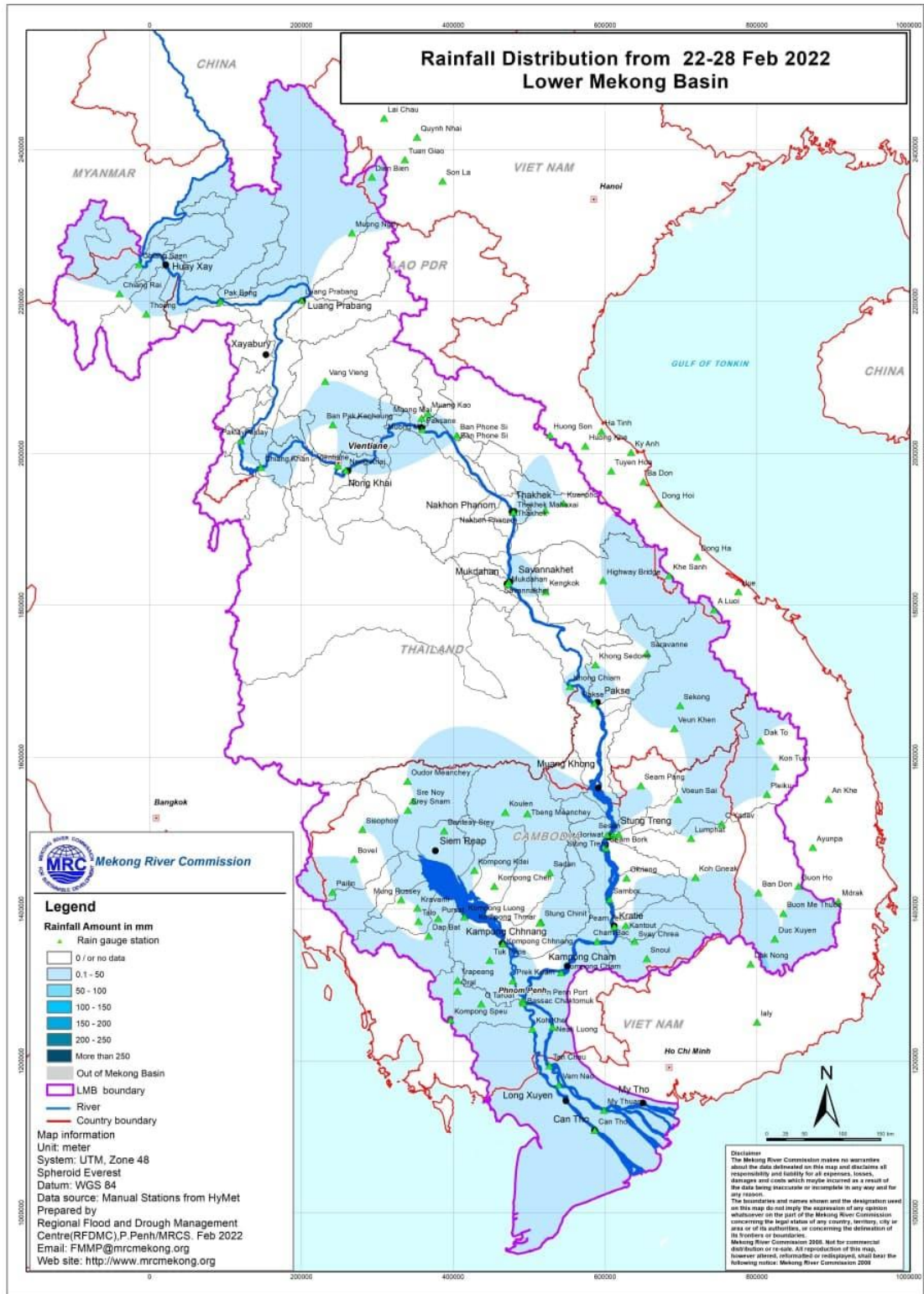


Figure 5: Weekly rainfall distribution over the LMB.

### 3 Water Levels in the Lower Mekong River

The hydrological regimes of the Mekong mainstream are illustrated by recorded water levels and flows at key mainstream stations: at Chiang Saen to capture mainstream flows entering from the Upper Mekong Basin (UMB); at Vientiane to present flows generated by climate conditions in the upper part of the LMB; at Pakse to investigate flows influenced by inflows from the larger Mekong tributaries; at Kratie in Cambodia to capture overall flows of the Mekong Basin; and at Viet Nam’s Tan Chau and Chau Doc to monitor flows to the Delta.

The key stations along the LMB and their respective model application for River Flood Forecasting during the wet season from June to October and River Monitoring during the dry season from November to May are presented in [Figure 6](#). The hydrograph for each key station is available from the MRC’s River Flood Forecasting: <http://ffw.mrcmekong.org/overview.php>. The weekly water levels and rainfall at each key station are summarised in **Annex A**.

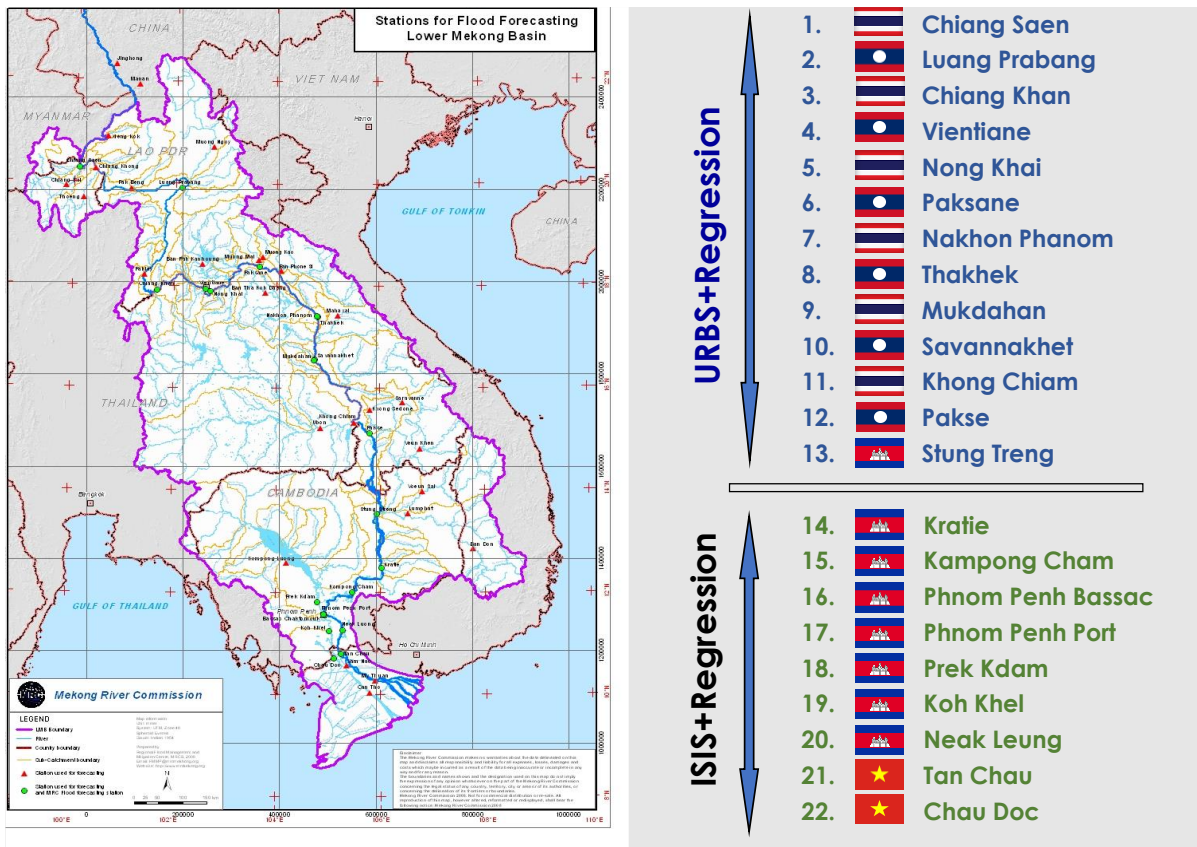
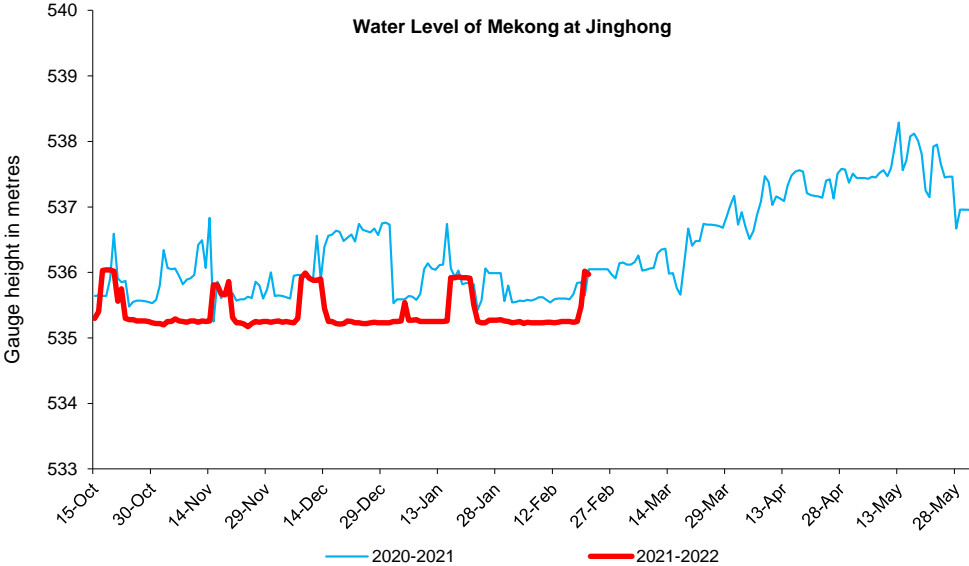


Figure 6: Key stations and model application for River Monitoring and Flood Forecasting.

The MRC’s observed water level at Jinghong showed a significant decrease from 535.97 m to 535.52 m during the weekly monitoring period from 22 to 28 Feb 2022 (recorded on 7:00 am) and stayed about 0.08 m lower than its two-year average (2020-2021) value. The Eyes on Earth (Mekong Dam Monitor) indicated that China’s Xiaowan dam released about 408 million cubic meters of water in its second major release since the end of the wet season. In total, 16 dams released a total of 796 million cubic meters of water. The outflow at Jinghong station decreased from 1,311.00 m<sup>3</sup>/s to 997.00 m<sup>3</sup>/s from 22 to 28 February 2022. [Figure 7](#) below presents water level that increased at the Jinghong hydrological station<sup>1</sup>, indicating the trend of fluctuating water level up to 28 February 2021.



**Figure 7. Water level at the Jinghong hydrological station during 15 Oct 2021 to 21 Feb 2022.**

Along with the sudden decreased outflow from Jinghong upstream, water level (WL) of monitoring station at Chiang Saen in Thailand decreased about 0.02 m from 22 to 28 Feb 2022 and stayed about 0.55 m higher than its long-term average (LTA), considered normal. Water level at Lao PDR’s Luang Prabang decreased about 0.02 m compared with last week and stayed 0.35 m lower than its historical maximum value. WLs at the monitoring stations from Chiang Khan in Thailand to Vientiane of Lao PDR increased up 0.50 m and remained higher than their LTA value over 1.00 m. Water levels from Nong Khai in Thailand rose about 0.38 m, while at Paksane in Lao PDR WL increased about 0.36 m, rising to their LTA level and considered normal. Also, WLs from Thailand’s Nakhon Phanom to Lao PDR’s Pakse increased about 0.25 m and stayed higher than their LTA level, except at Savannakhet where WL remained lower than its LTA value. Water levels from the stretches of the river from Stung Treng to Kompong Cham in Cambodia slightly increased and those from Chaktomuk to Koh Khel and Prek Kdam also increased due to less contributed rainfall from the upstream part (The Tonle Sap Lake area).

Based on hydrological phenomenon, the contribution of inflow water from the upstream of Lancang-Mekong in China to the Mekong mainstream is about 16% in total during the wet season from June to October and about 25% in total during the dry season from November to

<sup>1</sup> Near-real time data of hydro-meteorological monitoring at the Jinghong hydrological station is available at <https://portal.mrcmekong.org/monitoring/river-monitoring-telemetry>.

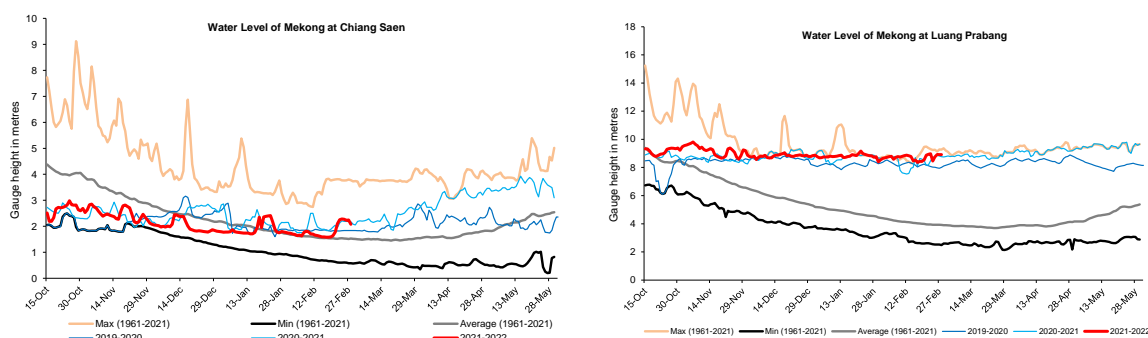
May. The whole inflow of water into the LMB is influenced by rainfall at the Mekong mainstream and its tributaries during the wet season.

### Chiang Saen and Luang Prabang

Water level during Feb 22-28 at Thailand’s Chiang Saen decreased from 2.10 m to 2.08 m and remained about 0.55 m higher than its Long-Term-Average (LTA), which was considered normal. When compared to last week, this week’s water level is relatively higher.

Water level at the Luang Prabang station in Lao PDR was down about 0.02 m, during the reporting period. Compared to last week, the figure shows that water level this week is still higher. The water level at this station was 0.35 m lower than its Maximum Value. The water levels at Chiang Saen and Luang Prabang are shown in [Figure 8](#) below.

Being situated between the upstream (Nam Beng, Nam Ou, Nam Suong, and Nam Khan) and downstream (Xayaburi) hydropower dams, the Luang Prabang station has a unique characteristic as it is influenced by the operations of all its surrounding dams. **Thus, the water level at this station can possibly change very rapidly during the early dry season.**

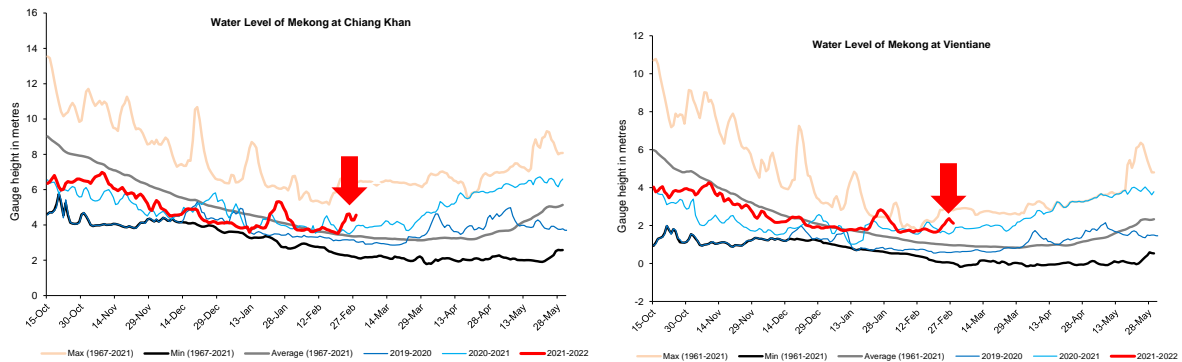


**Figure 8. Water levels at Chiang Saen in Thailand and Luang Prabang in Lao PDR.**

### Chiang Khan, Vientiane-Nong Khai and Paksane

The water level at Chiang Khan in Thailand (downstream of the Xayaburi dam) increased about 0.50 m during the reporting week. It rose about 1.21 m higher than its LTA. Moreover, water level downstream at Vientiane in Lao PDR also increased from 1.79 m to 2.12 m and was about 1.16 m higher than its maximum level during Feb 22-28, which considered abnormal. At Nong Khai station in Thailand, the water level was also up during the reporting period. It increased from 1.08 m to 1.46 m and reached with its LTA value. At Paksane in Lao PDR, water levels increased about 0.36 m from 2.19 m to 2.55 m. **The current water level at Paksane in Lao PDR is about 0.05 m higher than its LTA level, which considered normal.** The recently increased water levels from Chiang Khan to Nong Khai were obviously fluctuating due to hydropower operation and water released from upstream. The water levels at Vientiane and Paksane are shown in [Figure 9](#) below.

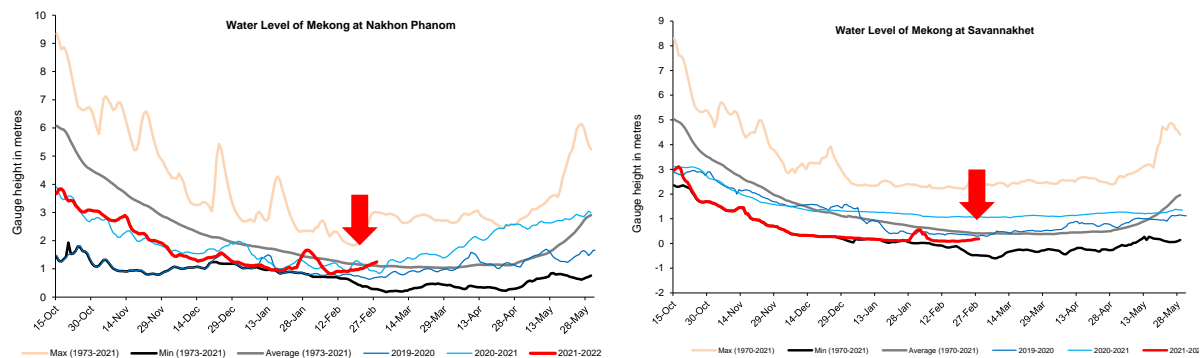




**Figure 9. Water levels Nong Khai and Paksane in Thailand and Lao PDR.**

### Nakhon Phanom to Pakse

Water levels from Nakhon Phanom in Thailand to Pakse in Lao PDR increased about 0.20 m, during the reporting period. **Water levels at these stations went up to above their LTA level.** The current WL at Savannakhet in Lao PDR is close to its LTA level, which considered normal. [Figure 10](#) shows the water levels at Nakhon Phanom and Savannakhet stations.

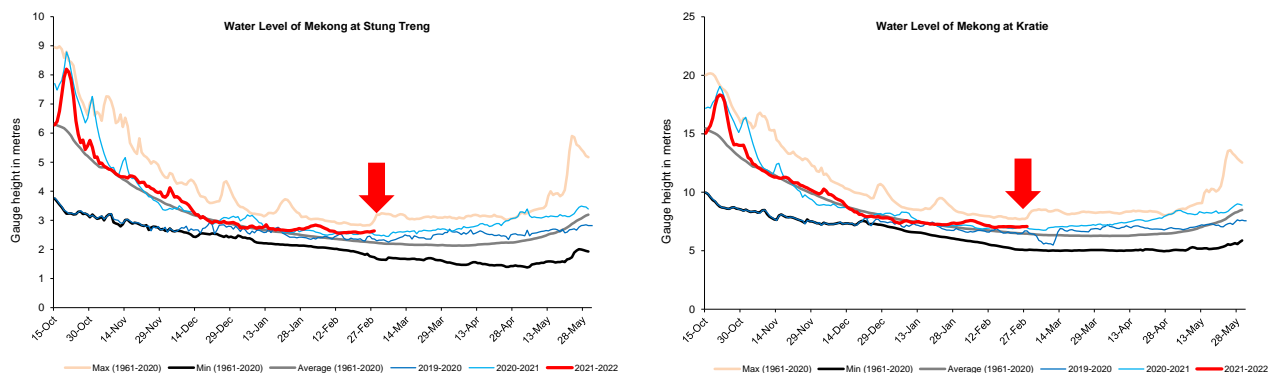


**Figure 10: Water levels at Nakhon Phanom and Savannakhet of Thailand and Lao PDR.**

### Stung Treng to Kompong Cham/Phnom Penh to Koh Khel/Neak Luong

With some contributed inflow from the upstream part of the Mekong River and the 3S river (Sekong, Se San, and Sre Pok), the water levels from Stung Treng to Kratie in Cambodia were slightly increasing during 22-28 February 2022. This week water level from Stung Treng to Kratie increased about 0.07 m and 0.03 m, respectively. The current water levels at Stung Treng and Kratie are staying about 0.40 m and 0.62 m higher than their LTA value, respectively. Water level at Kompong Cham was about 0.06 m below their LTA.

This week, the water levels at Stung Treng and Kratie were still higher than their LTA, which considered normal (as showed in [Figure 11](#)).



**Figure 11: Water levels at Stung Treng and Kratie on the Mekong River.**

At Chaktomuk on the Bassac River, due to some inflows from upstream catchment, the water level was up by about 0.21 m and stayed 0.03 m lower than its LTA value; while at Koh Khel, water level increased about 0.12 m, increasing 0.21 m higher than its LTA value. The water level at Prek Kdam on the Tonle Sap Lake increased about 0.05 m and was about 0.03 m higher than its LTA value. The water level at the Tonle Sap Lake (observed at Kompong Luong) was similar to Prek Kdam station's water level. The recently increased water level was due to some rainfall and inflow contributed from upstream of the Tonle Sap Lake area during the reporting period. The water level at the Tonle Sap Lake (observed at Kompong Luong) followed the same trend of Prek Kdam station's water level. **Water levels at these stations were staying close to their LTA level, which still considered normal.**

#### Tidal stations at Tan Chau and Chau Doc

This week, the water levels from 22 to 28 February 2022 at Viet Nam's Tan Chau and Chau Doc were fluctuating in between their Minimum and Maximum values due to daily tidal effects from the sea. The fluctuation was between 0.24 m and 1.13 m. The current water levels at **Tan Chau and Chau Doc were higher than their LTA level, which considered critical.**

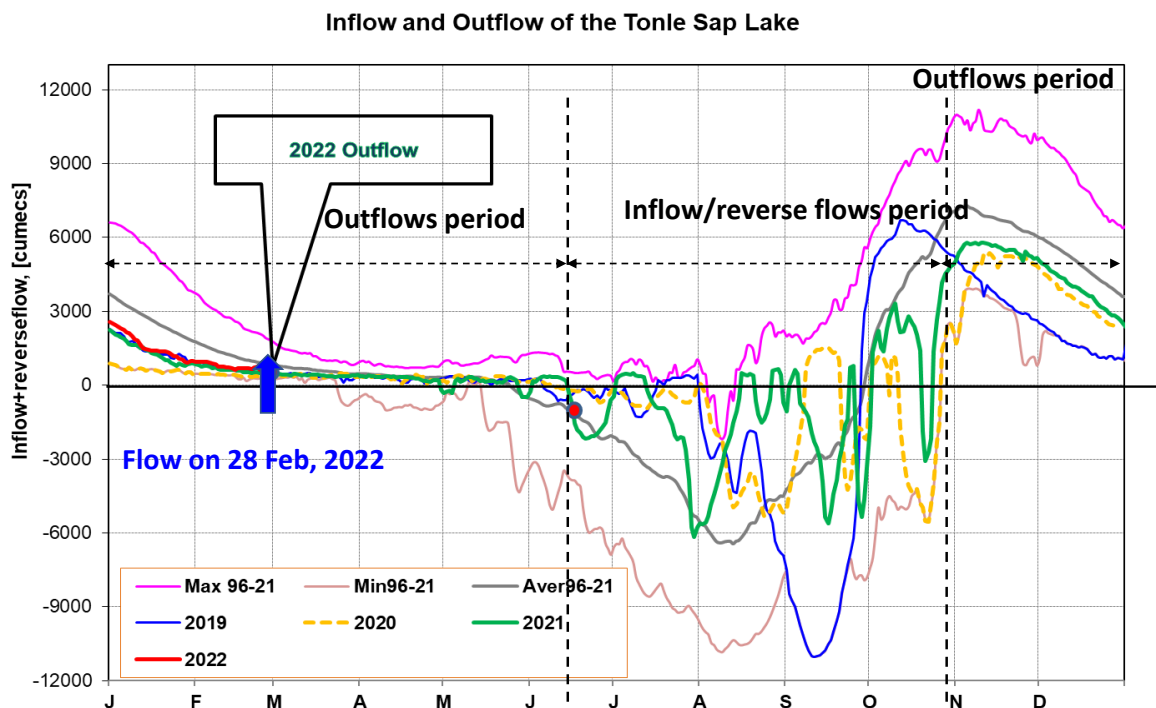
#### The Tonle Sap Flow

At the end of the wet season, when water levels along the Mekong River subside, the outflows of the Tonle Sap Lake return into the Mekong River and then to the Delta. This phenomenon normally takes place from end of September to October. Based on flow observation at Prek Kdam, the outflow of the Tonle Sap Lake was taking place since 10 October 2021.

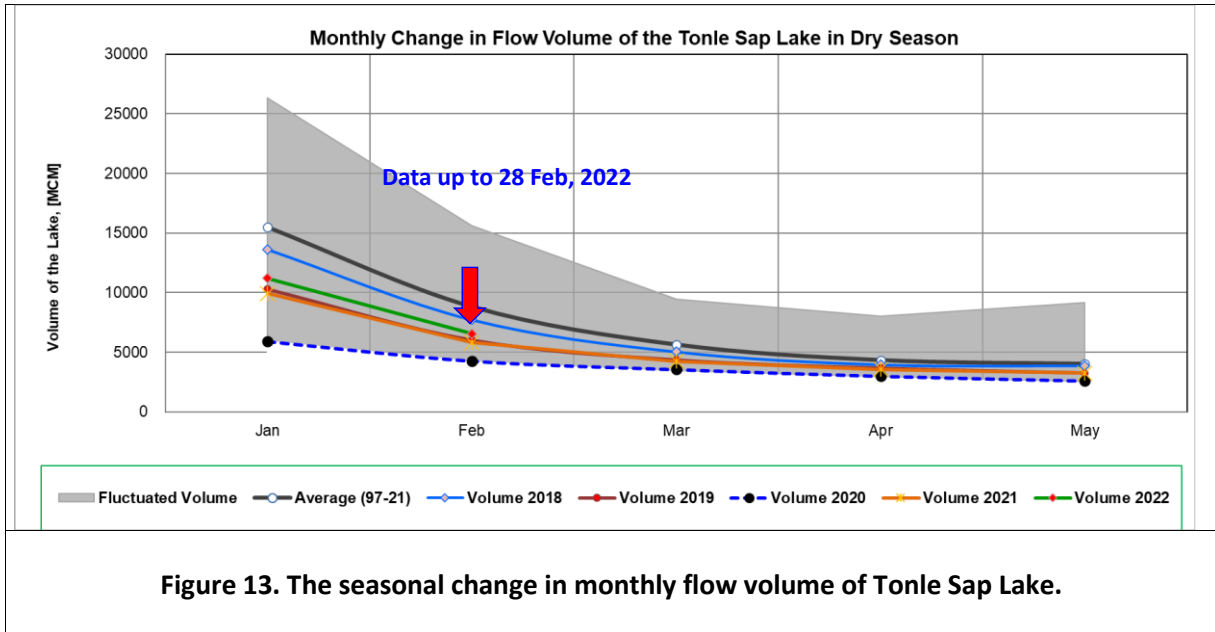
[Figure 12](#) shows the seasonal changes of the inflow/reverse flow and the outflow of the TSL at Prek Kdam in comparison with the flows of 2019 and 2020, and their LTA level (1997-2020). Up to February 28 of this reporting period, **it was observed that the main outflow to Tonle Sap Lake decreased due to less rainfall and inflows from upstream.** This decreased outflow of Tonle Sap Lake was most likely caused by less inflows and no rainfall from the catchment area. Up to present, the outflow from the Tonle Sap Lake condition in 2022 is higher than 2019, 2020 and 2021 outflow conditions. However, the outflow of 2022 is still lower than its LTA (1997-2020). For next week, less rainfall is forecasted for the Tonle Sap area; thus, the outflow into the Tonle Sap Lake is likely continuing to decrease from the current level.

[Figure 13](#) shows seasonal changes in monthly flow volumes up to 28 February 2022 for the Lake compared with the volumes in 2019, 2020, 2021 and their LTA, and the fluctuation levels (1997–2021). It shows that up to February 21, **the water volume of the Tonle Sap Lake was lower than its LTA but higher than 2019, 2020, 2021 during the same period**. The figure is displayed in [Table 1](#), which indicates that the Tonle Sap Lake has been affected by water levels from the Mekong River, the tributaries, and rainfall in the surrounding sub-catchments and ***considered critical***.

This demonstrates the influence of the relationships between the reverse flows, water levels of the Mekong River, inflows from tributaries, and the flow direction in the complex hydraulic environment of the Tonle Sap Lake during the wet and dry seasons. The data show that about half of the annual inflow volume into the Tonle Sap Lake has originated from the Mekong mainstream. Thus, flow alterations in the mainstream could have direct impact on the Tonle Sap Lake water levels and on its hydrology.



**Figure 12: Seasonal change of inflows and outflows of Tonle Sap Lake.**



**Figure 13. The seasonal change in monthly flow volume of Tonle Sap Lake.**

**Table 1. The monthly change in the flow volume of Tonle Sap Lake.**

Month	Average Volume (97-21) [MCM]	Max Volume [MCM]	Min Volume [MCM]	Volume 2018 [MCM]	Volume 2019 [MCM]	Volume 2020 [MCM]	Volume 2021 [MCM]	Volume 2022 [MCM]
Jan	15523.23	26357.53	5906.80	13633.41	10285.31	5906.80	9923.80	11214.32
Feb	8837.89	15596.22	4198.60	7729.72	6019.30	4264.19	5832.97	6558.79
Mar	5654.18	9438.24	3347.07	5037.06	4354.62	3553.99	4264.88	
Apr	4346.65	8009.14	2866.91	3956.47	3667.47	2992.61	3556.68	
May	4030.23	9176.93	2417.81	3864.00	3266.43	2594.92	3240.78	
Jun	5708.30	13635.01	2468.70	5919.18	3517.06	2641.88	3798.29	
Jul	11493.25	28599.56	2925.86	12024.96	4001.99	2925.86	5346.73	
Aug	24666.69	39015.12	4433.46	22399.65	7622.71	5941.07	10547.80	
Sep	39634.03	65632.35	12105.31	53639.54	24194.19	12105.31	16382.34	
Oct	46873.44	73757.23	19705.50	48193.08	30358.38	20799.13	27318.21	
Nov	37823.16	60367.33	18534.61	31036.07	19112.65	27546.80	28982.93	
Dec	25126.11	38888.95	10563.49	18469.21	10577.29	18251.65	20170.76	
	Critical situation, compared with historical Min values							
	Normal condition, compared with LTA (Long term average)							
	Low volume situation, compared with LTA values							
Unit: Million Cubic Meter (1 MCM= 0.001 Km <sup>3</sup> )								

## 4 Flash Flood in the Lower Mekong Basin

During February 22-28, the LMB was affected by three main weather factors. These include (i) The high-pressure from China extended its ridge to cover the upper part during the early week and weekend; (ii) southerly and south-easterly wind covered the upper part for almost the whole week and the passage of the water trough over the northern and upper parts during the second half of the week; and (iii) the south-easterly wind prevailed over the Gulf of Thailand.

These conditions caused cool weather for almost the entire area of the upper part with cold weather in some areas, particularly in the northern part during the middle and the weekend of the week.

According to the MRC-Flash Flood Guidance System (MRC-FFGS) and analysis, flash flood events were not detected during the reporting period over the LMB.

## 5 Drought Monitoring in the Lower Mekong Basin

### Weekly drought monitoring from 20 to 26 February 2022

Drought monitoring data for 2022 are available from Sunday to Saturday every week; thus, the reporting period is normally delayed by two days compared to Flood and Flash Flood reports. We adopt the Index of Soil Water Fraction (ISWF) data obtained from FFGS to represent soil moisture of agricultural indicator for both dry and wet seasons.

- **Weekly Standardised Precipitation Index (SPI1)**

Meteorological drought conditions of the LMB from February 20 to 26, as shown in [Figure 11](#), were relatively wet in the north and south of the region. Weekly SPI map shows that the LMB received from average to above rainfall in most parts of the region.

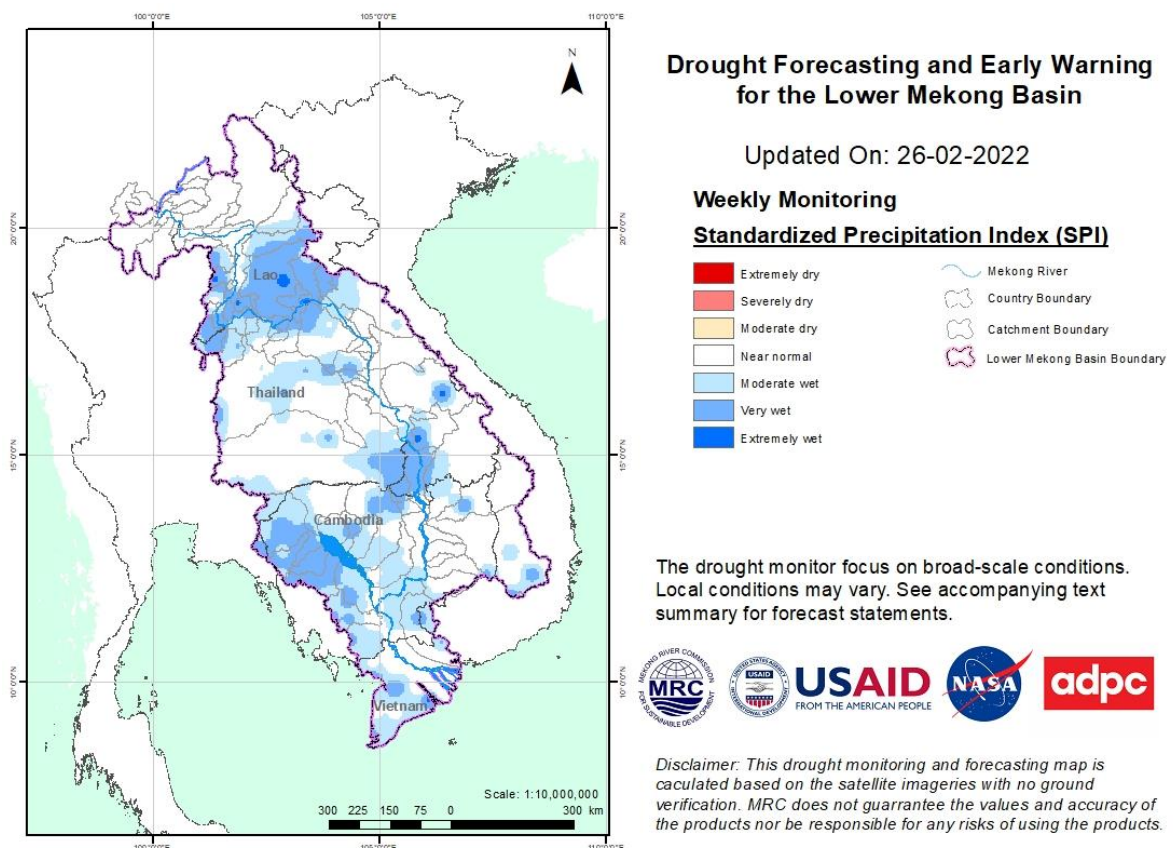
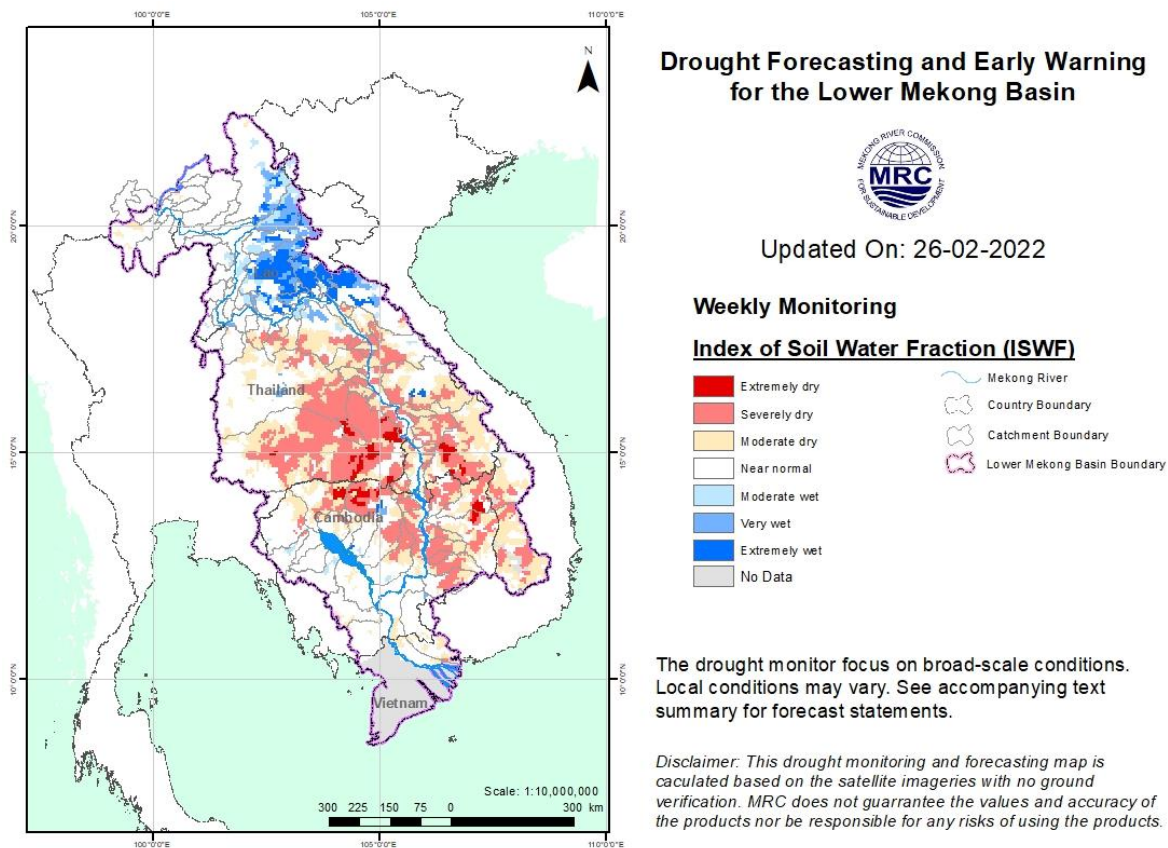


Figure 14: Weekly standardised precipitation index from Feb 20 to 26.

- **Weekly Index of Soil Water Fraction (ISWF)**

With some rain in the north, ISWF shows that from Feb 13 to 19, as displayed in [Figure 12](#), the LMB was much wetter in the upper part compared with the conditions last week (Feb 13-19). While the central and south-eastern areas were still severely dry due to the absence of rain during dry season. The conditions were not preferable for crop growing. However, this does not mean the region were facing any serious agricultural drought as it is a normal phenomenon the LMB receives very little or no rain during dry season.

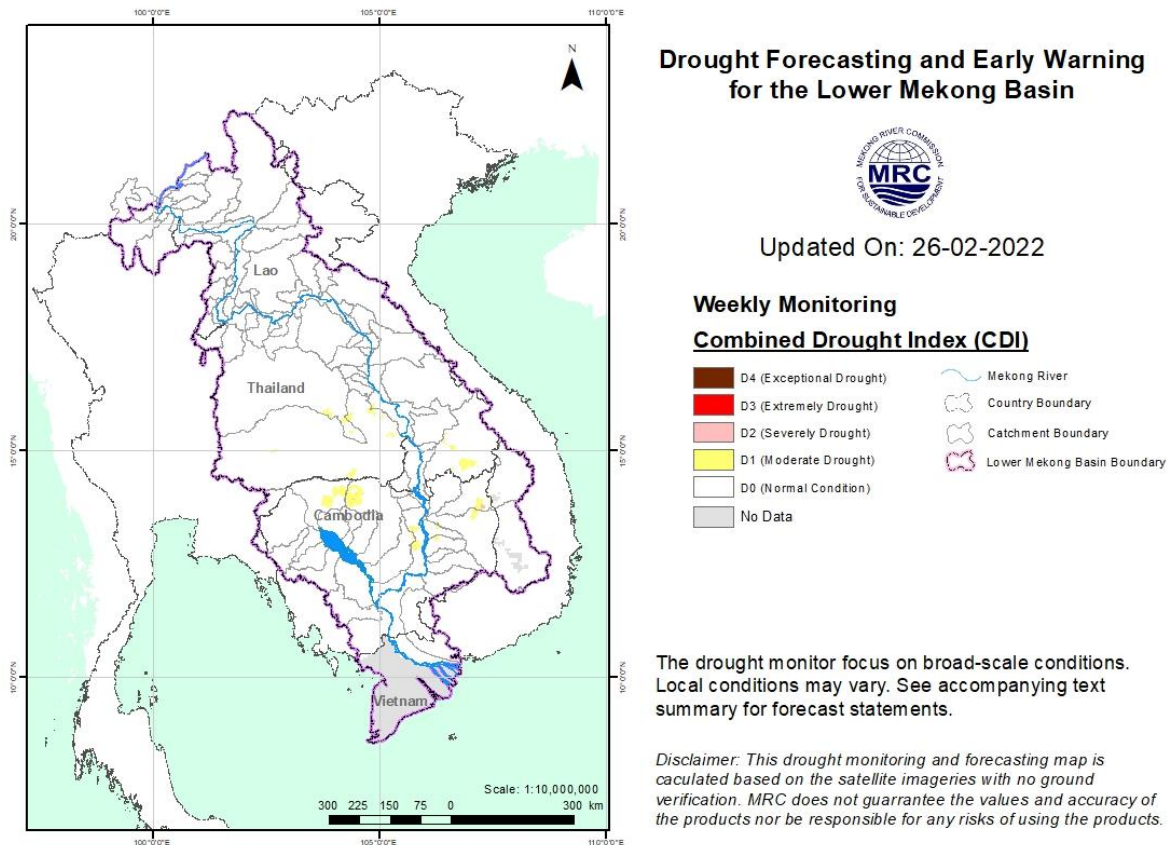
**Note:** The index of soil water fraction presents the current soil water fraction conditions compared with normal month; therefore, it normally shows extremely dry during dry season which is completely different from SPI that is standardized to its specific month of the years. However, this does not mean that the areas are threatened by agricultural drought as generally during transition period of wet and dry seasons and dry season only the irrigated areas are used for agricultural plantation.



**Figure 15: Weekly Index of Soil Water Fraction from Feb 20 to 26.**

- **Weekly Combined Drought Index (CDI)**

With a better condition, the combined drought indicator, as displayed in [Figure 13](#), reveals that during 20-26 Feb 2022 the LMB was at normal condition in most parts of the region. Moderate and severe droughts in the previous weeks disappeared due to some rain caused by low pressures.



**Figure 16: Weekly Combined Drought Index during Feb 20-26.**

More information on Drought Forecasting and Early Warning (DFEW) as well as the explanation is available here: <http://droughtforecast.mrcmekong.org/templates/view/our-product>. DFEW provides not only weekly monitoring and forecasting information but also a three-month forecast of drought indicators with seasonal outlook which are updated every month based on international weather forecast models. Details on drought forecast are described in section [6.4](#) of this report.



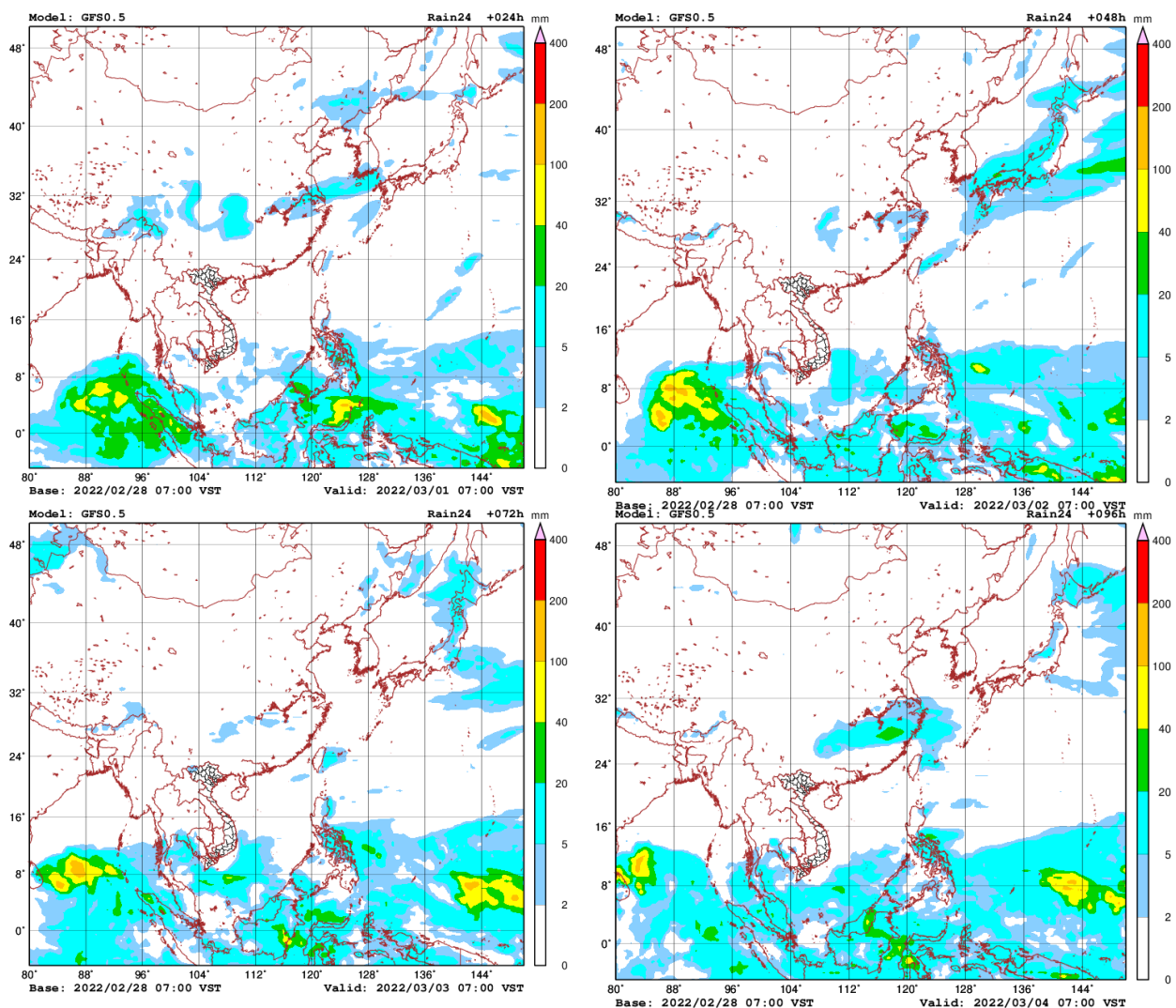
## 6 Weather and Water Level Forecast and Flash Flood Information

### 6.1 Weather and rainfall forecast

Based on the analysis of the synoptic meteorological information and result from the Global Forecast System (GFS) Model, in the coming week, three main factors might affect the LMB. They include (i) high pressure from China in the upper part, (ii) the westerly wind at high altitude prevailing over the northern and upper north-eastern parts, and (iii) the prevailing weak Southwest Monsoon from the Gulf of Thailand to the lower part of the LMB.

During March 1-7, small rainfall (5-20 mm/24h) or no rain may occur in some areas of the LMB.

[Figure 14](#) shows accumulated rainfall forecast (24hrs) of the GFS model during March 1-7.



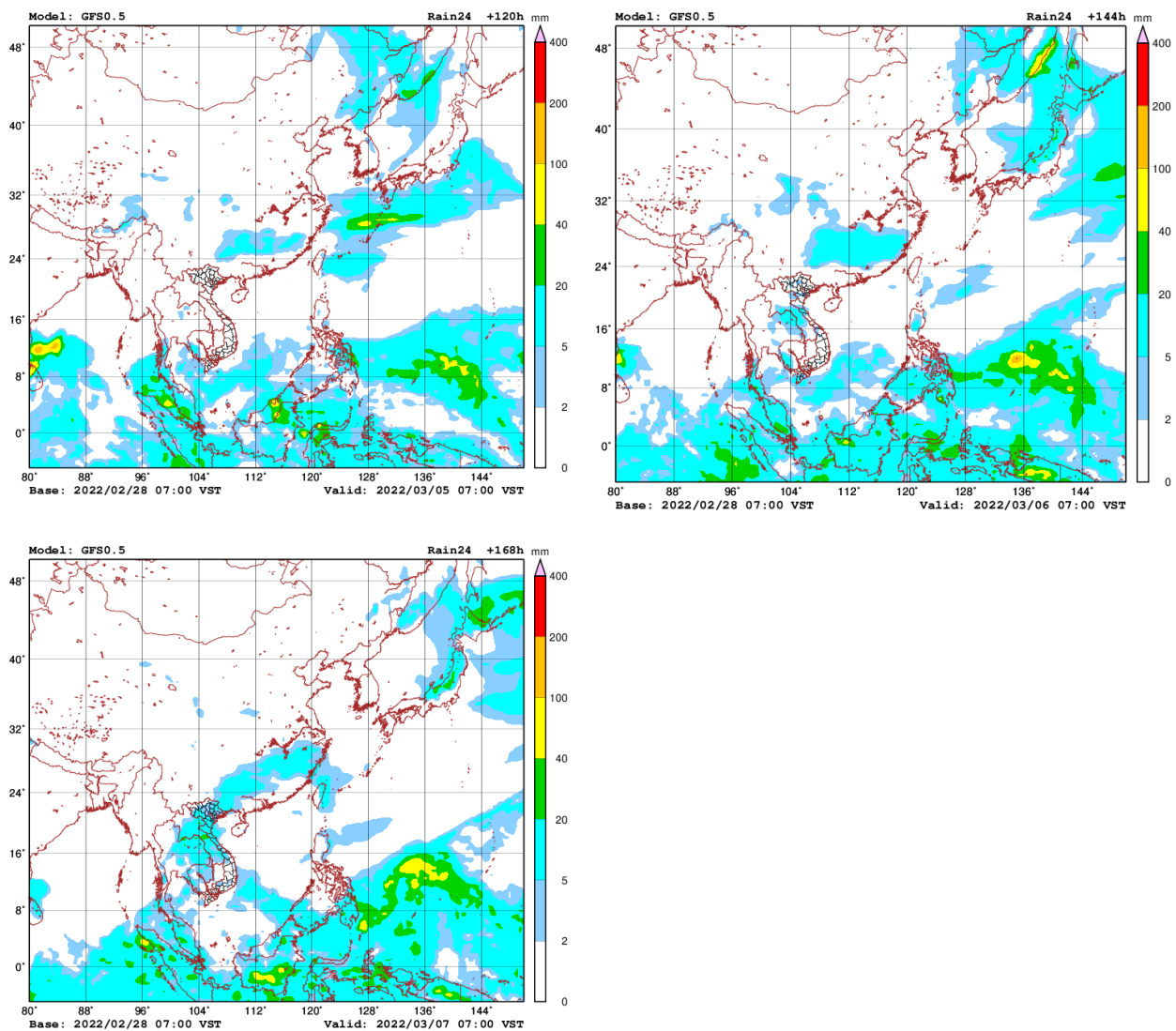


Figure 17: Accumulated rainfall forecast (24 hrs) of model GFS.

## 6.2 Water level forecast

### Chiang Saen and Luang Prabang

Based on February 28's weekly river monitoring bulletin, the weekly forecast water level at Chiang Saen in Thailand is expected to increase from 2.00 m to 2.12 m in the next seven days. The trend of water level at these stations will continue staying higher than its LTA.

For Luang Prabang in Lao PDR, the water level is likely to remain constant at 8.90 m in the next seven days. The current water level is higher than its maximum value. Rainfall is forecasted in the area in the next seven days.

### Chiang Khan, Vientiane-Nong Khai and Paksane

Water level at Chiang Khan station in Thailand is forecasted to go up about 0.11 m for the next seven days. From Vientiane in Lao PDR and Nong Khai in Thailand, WLS will increase about 0.20 m in the next seven days. At Paksane in Lao PDR, water level will increase about 0.10 m

due to some inflow from the upper catchments and hydropower dam operation. Rainfall is forecasted in this area in the next seven days. The water levels at Nong Khai and Paksane will remain close to their LTA level.

### **Nakhon Phanom to Pakse**

Water levels from Nakhon Phanom to Mukdahan in Thailand will increase between 0.05 m and 0.15 m in the next seven days. The water levels from Khong Chiam in Thailand to Pakse in Lao PDR will increase about 0.30 m. Water levels at these stations will stay higher than their LTA level, except at Savannakhet station the WL will still lower than its LTA value. Next week precipitation is forecasted in the area.

### **Stung Treng to Kompong Cham/Phnom Penh to Koh Khel/Neak Luong**

From Stung Treng to Kratie on the Mekong River in Cambodia, the water levels will go up about 0.22 m over the next seven days. WLs from Kompong Cham to downstream at Neak Luong will be up about 0.10 m. Rainfall is forecasted for the area between Stung Treng and Kompong Cham during next week.

The water levels of the Tonle Sap Lake at Prek Kdam and Phnom Penh Port as well as at Phnom Penh's Chaktomuk on the Bassac River will decrease about 0.03 m over the next seven days.

Water levels at most of the stations will continue to stay lower than their LTA value, particularly in the lower part of the region from the Bassac at Phnom Penh to Koh Khel as well as from Tonle Sap at Prek Kdam to Phnom Penh Port, including the Tonle Sap Lake. No rainfall is forecasted for the low-lying area of Cambodia next week.

### **Tidal stations at Tan Chau and Chau Doc**

For Viet Nam's Tan Chau on the Mekong River and Chau Doc on the Bassac River, water levels will be moving up and down in between their Minimum and Maximum values following daily tidal effects from the sea.

[Table 3](#) shows the weekly River Monitoring Bulletin issued on February 28. Results of the started weekly river monitoring bulletin are also available at [http://ffw.mrcmekong.org/bulletin\\_wet.php](http://ffw.mrcmekong.org/bulletin_wet.php).

### **6.3 Flash Flood Information**

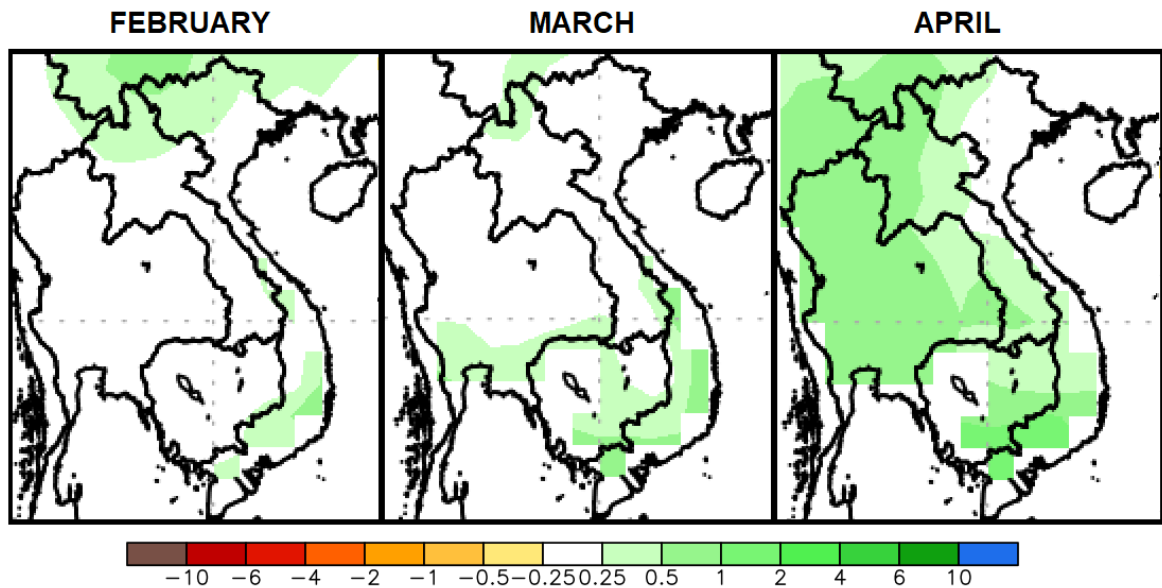
Flash flood events are not likely to happen in the LMB. However, local heavy rain in a short period of time might still be possible with unexpected short flash floods. During the dry season if extreme weather occurs, the information on flash flood guidance for the next one, three, and six hours is updated at <http://ffw.mrcmekong.org/ffg.php>.

Further detailed information on Flash Flood Information Warning, as well as on its explanation, is available for download [here](#).

### **6.4 Drought forecast**

There are several climate-prediction models with different scenarios on the upcoming months until March 2022. The MRC’s DFEWS adopts an ensemble model called the North America Multi-Model Ensemble (NMME), which averages all scenarios.

The global scale of rainfall prediction is used to see how the rain distribution looks like for the coming months. [Figure 15](#) shows the ensemble mean of daily average precipitation (mm/day) each month from February to April 2022 produced by the NMME.



**Figure 18. Daily average of monthly rainfall anomaly forecast from February to April 2022.**

The ensemble prediction model based on the initial conditions in January 2022 reveals that the LMB is likely to receive average rainfall and under normal conditions in February and March while receive relatively high amount of rainfall in April 2022. Based on the rainfall forecasts, April is likely to be much wetter than normal year especially in the north and central parts of the LMB.

The 2021 dry season is relatively wetter than that of 2020 and the monsoon rain in the 2021 wet season has arrived earlier than it did in 2019 and 2020 especially over the upper and central parts of the LMB.

Table 2. Weekly River Monitoring Bulletin.



## Mekong Bulletin

Mekong River Commission Secretariat (MRCS)

Regional Flood and Drought Management Centre (RFDMC)

P.O. Box 623 #576, National Road #2, Chak Angre Krom, Meanchey, Phnom Penh, Cambodia

Tel: (855-23) 425353, Fax: (855-23) 425363, Email: floodforecast@mrcmekong.org

Forecast period from: 01 March to 07 March 2022

Date: 28 February 2022

LOCATION	Country	Observed Rainfall (mm)	Zero gauge above M.S.L (m)	Min water level against zero gauge (m)	Observed W. level against zero gauge (m)		Forecasted Water Levels (m)						
					27-Feb	28-Feb	01-Mar	02-Mar	03-Mar	04-Mar	05-Mar	06-Mar	07-Mar
Jinhong		0.0	-	-	535.51	535.52							
Chiang Saen		0.0	357.110	0.00	2.24	2.08	2.00	1.95	1.92	1.96	2.01	2.07	2.12
Luang Prabang		0.0	267.195	2.53	8.92	8.92	8.90	8.82	8.77	8.80	8.80	8.85	8.90
Chiang Khan		0.0	194.118	1.91	4.28	4.56	4.62	4.65	4.60	4.56	4.59	4.63	4.67
Vientiane		0.0	158.040	-0.28	2.22	2.12	2.30	2.35	2.37	2.34	2.30	2.34	2.37
Nongkhai		0.0	153.648	0.33	1.61	1.46	1.58	1.61	1.62	1.58	1.53	1.56	1.59
Paksane		0.0	142.125	0.10	2.52	2.55	2.58	2.67	2.70	2.72	2.67	2.62	2.64
Nakhon Phanom		0.0	130.961	0.18	1.21	1.25	1.27	1.30	1.35	1.37	1.38	1.34	1.30
Thakhek		0.0	129.629	1.38	2.53	2.58	2.61	2.65	2.71	2.75	2.77	2.72	2.67
Mukdahan		0.0	124.219	0.72	1.69	1.69	1.69	1.72	1.75	1.78	1.82	1.85	1.82
Savannakhet		0.0	125.410	-0.65	0.18	0.18	0.19	0.20	0.22	0.24	0.26	0.28	0.26
Khong Chiam		0.0	89.030	1.02	2.06	2.08	2.09	2.12	2.18	2.23	2.28	2.33	2.38
Pakse		0.0	86.490	0.03	1.12	1.16	1.19	1.22	1.26	1.30	1.34	1.37	1.40
Stung Treng		nr	36.790	0.32	2.62	2.64	2.66	2.68	2.7	2.72	2.74	2.76	2.77
Kratie		nr	-1.080	3.06	7.06	7.08	7.11	7.14	7.18	7.21	7.24	7.28	7.32
Kompong Cham		0.5	-0.930	0.65	2.82	2.84	2.87	2.90	2.94	2.98	3.01	3.03	3.07
Phnom Penh (Bassac)		nr	-1.020	1.58	2.49	2.42	2.40	2.36	2.33	2.36	2.38	2.39	2.41
Phnom Penh Port		-	0.000	0.14	1.51	1.44	1.41	1.38	1.36	1.40	1.43	1.45	1.46
Koh Khel		nr	-1.000	1.52	2.62	2.45	2.37	2.33	2.30	2.32	2.34	2.38	2.40
Neak Luong		3.6	-0.330	0.81	2.00	2.00	1.90	1.88	1.85	1.82	1.80	1.85	1.90
Prek Kdam		nr	0.080	0.58	1.47	1.42	1.40	1.40	1.38	1.37	1.39	1.41	1.43
Tan Chau		0.0	0.000	-0.37	0.79	0.95	1.20	1.28	1.24	1.17	1.07	0.94	0.80
Chau Doc		nr	0.000	-0.60	0.94	1.13	1.35	1.45	1.40	1.30	1.22	1.34	1.23

REMARKS:

- : not available.
- \*: reference stations without forecast.
- nr: no rain.

River Flood Forecaster

KHEM Sothea

NOTE: Discharge at Luang Prabang may be influenced by hydropower operations (at both upstream and downstream). For more info, please refer to this link: <http://www.mrcmekong.org/>; [http://ffw.mrcmekong.org/bulletin\\_wet.php](http://ffw.mrcmekong.org/bulletin_wet.php); <http://ffw.mrcmekong.org/reportflood.php>

## 7 Summary and Possible Implications

### 7.1 Rainfall and its forecast

This week, rainfall was observed in the Mekong region, varied from 3.50 mm to 47.40 mm. Compared with last week's amount, the rainfall this week was considered lower in the LMB.

Based on the forecasted rainfall from satellite using GFS data, rainfall is likely to take place in the areas from the lower part of Cambodia, the 3S area and Mekong Delta of Viet Nam during March 1-7, varying from 0.10 mm to 50 mm. This indicates that the wet and warm weather has started over the LMB.

### 7.2 Water level and its forecast

The MRC's observed water level at Jinghong showed a significant decrease from 535.97 m to 535.52 m during the weekly monitoring period from 22 to 28 Feb 2022 (recorded on 7:00 am) and stayed about 0.08 m lower than its two-year average (2020-2021) value. The Eyes on Earth (Mekong Dam Monitor) said that China's Xiaowan dam released about 408 million cubic meters of water in its second major release since the end of the wet season. In total, 16 dams released a total of 796 million cubic meters of water. The outflow at Jinghong station decreased from 1,311.00 m<sup>3</sup>/s to 997.00 m<sup>3</sup>/s on 22 and 28 February 2022.

Water levels in the lower part of the monitoring locations in the LMB during this reporting week were increasing from Chiang Sean to Luang Prabang, and from Chaing Khan to Paksane they were increasing. The current water levels at Chiang Khan and Vientiane are higher than their LTA level. The water levels from Nakhon Phanom in Thailand to Pakse in Lao PDR were also increasing. Water levels at these stations were higher than their LTA value, except WL at Savannakhet which was moving up close to its LTA, considered normal. In Cambodia, water levels at Stung Treng and Kratie were higher than their LTA value, while at Kompong Cham water levels dropped lower than their LTA level. Water levels at Neak Luong, Bassac at Phnom Penh, and Prek Kdam in Cambodia were also higher than their LTA level. The high level was due to inflows from upstream and rainfall in the region from 22 to 28 February 2022. Generally, this week's water levels were relatively higher than those of last week from the upper, middle and the lower parts in the LMB.

Water levels at Chiang Saen, Luang Prabang, Chiang Khan, Vientiane, Paksane, Nakhon Phanom, Mukdahan, Khong Chiam, Pakse, Stung Treng, Kratie, Chaktomuk at Phnom Penh, Koh Khel, Neak Luong, Prek Kdam stations were higher than their LTA level, while those at other stations were lower than their LTA level.

The flow volume of the Tonle Sap Lake was lower than its LTA. From next week, the flow is expected to continue slightly decreasing due to less rainfall forecasted in the inflow catchments of the Tonle Sap Lake.

From Stung Treng to Kompong Cham water levels will go up and from Chaktomuk in Phnom Penh the water levels will also slightly increase. The water levels – at Neak Luong on the Mekong River, from Prek Kdam to Phnom Penh Port on the Tonle Sap, and Koh Khel on the Bassac – are forecasted to continue staying close to their LTA levels.

The situation in Tan Chau on the Mekong River and Chau Doc on the Bassac River is expected to remain fluctuating. The current fluctuation of water level is in between their Minimum and Maximum levels, which considered very critical.

Since the fourth week of October 2021, water levels across most monitoring stations in the LMB have significantly dropped to the level lower than their LTA (from upper to lower stretches within the LMB). For a more complete preliminary analysis of the hydrological conditions in the LMB over July–December 2020, November 2020 to May 2021 and June to October 2021 see this [Situation Report](#).

The contribution to the Mekong River’s flow from the UMB in China (Yunnan component) is about 16% by the time the river discharges through the Mekong Delta into the Sea. By far the major contribution comes from the two major ‘left-bank’ (Eastern) tributaries between Vientiane – Nakhon Phanom and Pakse – Stung Treng, which together contribute more than 40% of the flows.

### **7.3 Flash flood and its trends**

With the predicted of rainfall for the coming week as mentioned earlier in [section 6.1](#), major flash floods are not likely to happen in the LMB.

### **7.4 Drought condition and its forecast**

Drought conditions of the LMB from 20 to 26 February 2022 were normal in most parts of the LMB except some moderate and severe soil moistures in the middle and southeastern parts due to absence of rain but it is quite normal during dry season. The region showed no significant threat.

For the upcoming three-month forecast, the LMB is likely to receive average rainfall and under normal conditions in February and March while receive relatively high amount of rain in April 2022. Based on the rainfall forecasts, April is likely to be much wetter than normal year especially in the north and central parts of the LMB.

**Annex A: Tables for weekly updated water levels and rainfall at the Key Stations**

Table A1: Weekly observed water levels

2021	Jinghong	Chiang Saen	Luang Prabang	Chiang Khan	Vientiane	Nongkhai	Paksane	Nakhon Phanom	Mukdahan	Pakse	Stung Treng	Kratie	Kompong Cham	Phnom Penh (Bassac)	Koh Khel	Neak Luong	Prek Kdam	Tan Chau	Chau Doc
22-02-2022	535.97	2.10	8.94	4.06	1.79	1.08	2.19	1.01	1.56	0.94	2.57	7.05	2.76	2.21	2.33	1.56	1.37	0.24	0.30
23-02-2022	535.97	2.25	8.98	4.23	1.96	1.25	2.21	1.06	1.57	0.98	2.58	7.03	2.74	2.32	2.30	1.64	1.46	0.17	0.28
24-02-2022	535.98	2.28	8.46	4.60	2.08	1.38	2.29	1.11	1.59	0.98	2.60	7.03	2.62	2.43	2.47	1.64	1.42	0.25	0.42
25-02-2022	535.99	2.27	8.75	4.62	2.26	1.52	2.36	1.14	1.63	1.00	2.61	7.03	2.64	2.45	2.59	1.78	1.43	0.41	0.58
26-02-2022	535.68	2.23	8.93	4.28	2.37	1.70	2.43	1.18	1.69	1.08	2.60	7.06	2.76	2.47	2.63	1.92	1.33	0.61	0.76
27-02-2022	535.51	2.24	8.92	4.28	2.22	1.61	2.52	1.21	1.69	1.12	2.62	7.06	2.82	2.49	2.62	2.00	1.47	0.79	0.94
28-02-2022	535.52	2.08	8.92	4.56	2.12	1.46	2.55	1.25	1.69	1.16	2.64	7.08	2.84	2.42	2.45	2.00	1.42	0.95	1.13

Table A2: Weekly observed rainfall

2021	Jinghong	Chiang Saen	Luang Prabang	Chiang Khan	Vientiane	Nongkhai	Paksane	Nakhon Phanom	Mukdahan	Pakse	Stung Treng	Kratie	Kompong Cham	Phnom Penh (Bassac)	Koh Khel	Neak Luong	Prek Kdam	Tan Chau	Chau Doc
22-02-2022	3.5	3	0	0	0	0	0.3	0	0	0	0	0	0	0	0	43.8	0	0	0
23-02-2022	7.5	0.5	0	0	0	0	0	0	0	0	0	0	0	0	0	0	0	0	0
24-02-2022	0	0	0	0	0	0	0	0	0	0	0	0	0	0	0	0	0	0	0
25-02-2022	0	0	0	0	0	0	0	0	0	0	0	0	0	0	0	0	0	0	0
26-02-2022	0	0	0	0	0	0	0	0	0	0	0	0	0	0	0	0	0	0	0
27-02-2022	0	0	0	0	0	0	0	0	0	0	0	0	0	0	0	0	0	0	0
28-02-2022	0	0	0	0	0	0	0	0	0	0	0	0	0.5	0	0	3.6	0	0	0





## Mekong River Commission Secretariat

P. O. Box 6101, 184 Fa Ngoum Road, Unit 18 Ban Sithane Neua, Sikhottabong District, Vientiane 01000, Lao PDR  
Tel: +856 21 263 263. Fax: +856 21 263 264 [www.mrcmekong.org](http://www.mrcmekong.org)

© Mekong River Commission 2020